

# **Business Opportunities in Hyogo & Kobe**



**Hyogo Business & Cultural Center**  
**Junko Kobayashi**

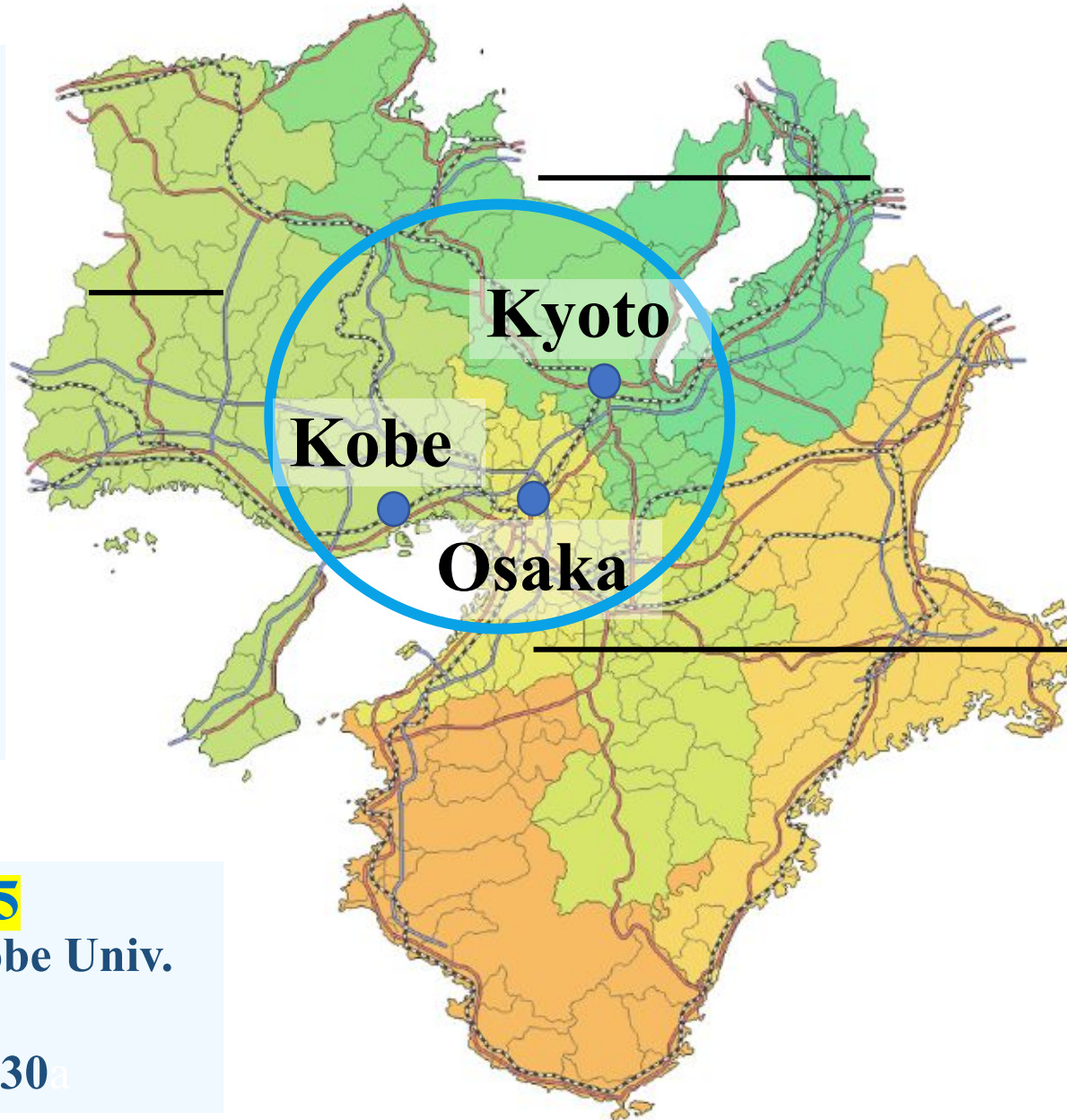
# Kyoto-Osaka-Kobe Bay Area Startup Ecosystem

## Hyogo Prefecture

- Kawasaki Heavy Industries, Ltd.
- Kobe Steel, Ltd.
- Sumitomo Rubber Industries, Ltd.
- Toyo Tire
- Asics Corporation
- Sysmex Corporation
- P & G
- Pasona Inc.

## # of Universities: 135

- Kyoto, Osaka, and Kobe Univ.
- Medical Schools: 9
- Dept. of Engineering: 30



## Kyoto Prefecture

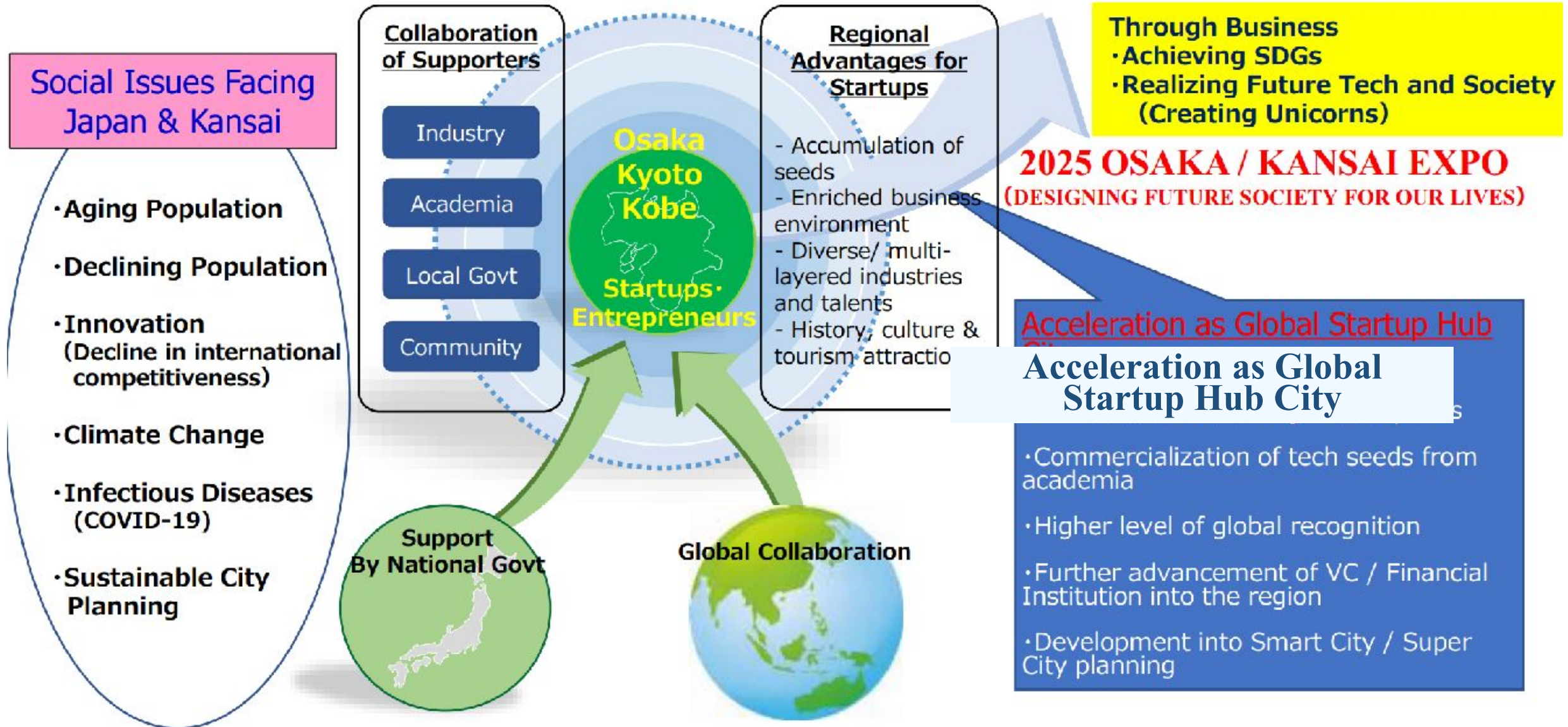
- Kyocera Corporation
- Murata Manufacturing Co., Ltd.
- Nidec Corporation
- Nintendo Co., Ltd.
- SG Holdings
- Omron Corporation
- Shimadzu Corporation

## Osaka Prefecture

- Sanofi-Sandoz Corporation
- Daiichi Sankyo Co., Ltd.
- Daiichi Industries, Ltd.



# Kyoto-Osaka-Kobe Bay Area Startup Ecosystem





**Osaka**

← **KIX**

← **Kobe Airport**

**Downtown Kobe**









# Kobe, the capital city of Hyogo Prefecture

**Mt. Rokko**

**➡ To Osaka**

**Kobe Univ.**

**Shin-Kobe  
Sannomiya**

**Rokko Island**

**Port Island**

- Port of Kobe
- Kobe Biomedical Innovation Cluster
- No.1 Supercomputer “Fugaku”

**Industrial  
Area**

**Kobe Airport**



## Easy Access to Anywhere in Japan



**From Kobe Airport**



**By Bullet Train**



# Port of Kobe

## International Strategic Port

Container Yard



## Shipyard

- Kawasaki Heavy Industries
- Mitsubishi Heavy Industries



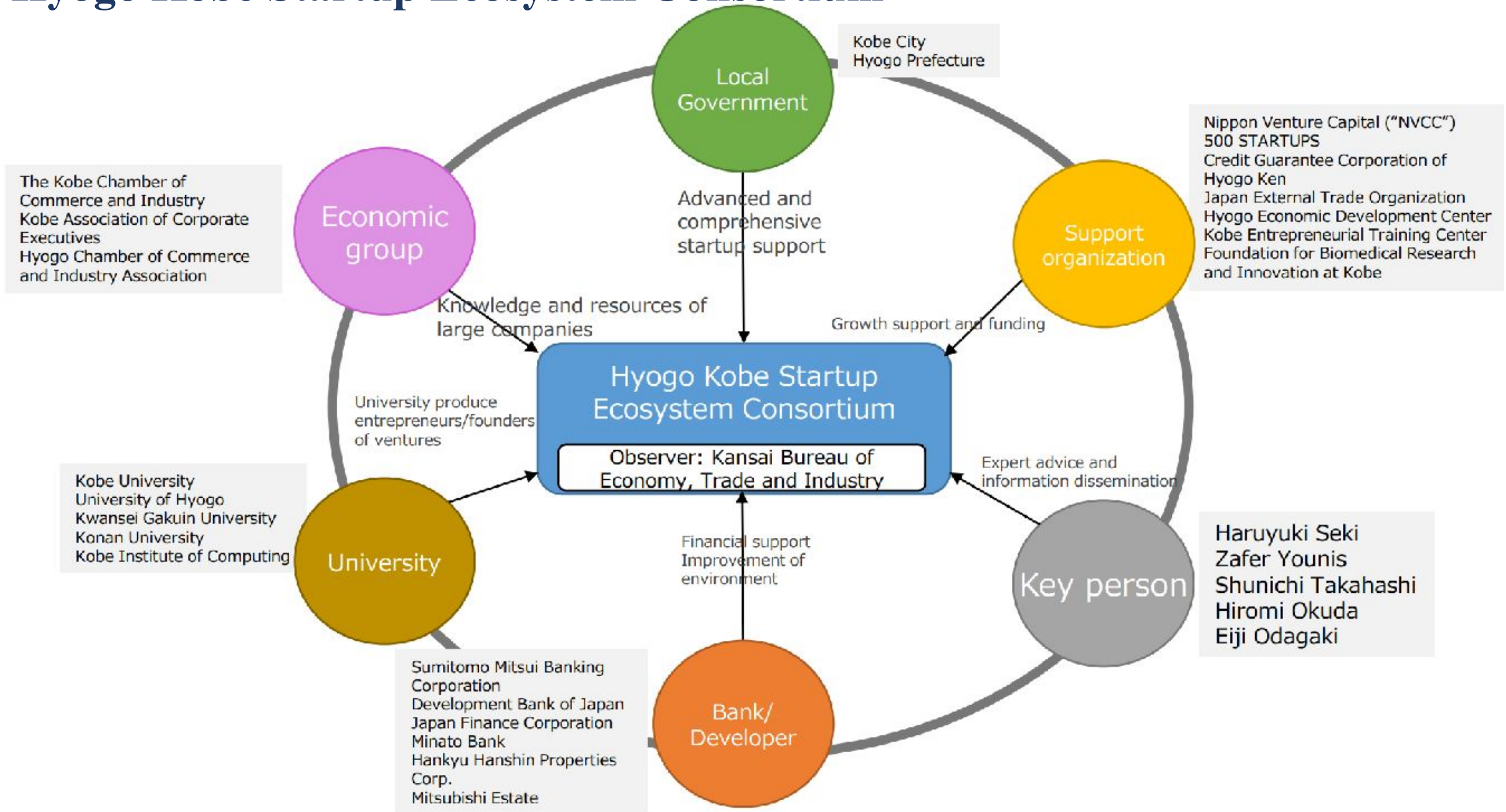
Kobe Liquefied Hydrogen Receiving Terminal  
“Hy touch Kobe” and LNG Carrier

## International Cruise Port





# Hyogo Kobe Startup Ecosystem Consortium





# KOBE Biomedical Innovation Cluster

379

cutting-edge research institutes, highly specialized hospitals, biomedical and life science companies, and universities.



◆ Drug discovery ◆ Regenerative medicine ◆ Pharmaceuticals and quasi-drugs ◆ New diagnostic equipment ◆ Physical and chemical analysis equipment ◆ Medical equipment ◆ Beauty, health, welfare and nursing care equipment and services ◆ IT ◆ Bioinformatics software ◆ Services for hospitals and medical institutions ◆ Cosmetics ◆ Health foods and supplements



# Supercomputer Fugaku



- ◆ Construction
- ◆ Machinery
- ◆ Chemicals
- ◆ Textiles
- ◆ Rubber materials
- ◆ Pharmaceuticals
- ◆ Iron and steel
- ◆ Nonferrous metals
- ◆ Metal products
- ◆ Electrical and precision instruments
- ◆ Disaster prevention and environment
- ◆ Electricity and gas
- ◆ Information and telecommunications



# Advantages of Hyogo & Kobe

## Japan

- A safe and stable country with a stable government
- Intellectual property rights are protected
- Excellent logistics and inventory management
- Highly skilled, diligent, hardworking, and innovative labor force

## Hyogo Kobe

- KOBE Biomedical Innovation Cluster and Supercomputer Fugaku
- Heavy industries, machineries, and chemical industries
- Transportation convenience and excellent logistics
- Environmental technologies (hydrogen energy industries)

## What we want

- ❑ Innovative technologies in life science, healthcare, and pharmaceuticals / medical industries
- ❑ Solving issues of aging and labor shortage
- ❑ Innovative technologies in manufacturing
- ❑ Innovative technologies in clean tech and for climate change
- ❑ Same as in AI, IoT., fintech, smart cities, and mobility



# Expand Business Network in Kobe



## **ACCJ KANSAI** (American Chamber of Commerce in Japan)

**Yoko Furuyama**

**Vice President**

**Executive Officer, Legal and Government Relations,  
Procter & Gamble Japan K.K.**



## **Japan America Society of Kobe**

**Motoi Oyama**

**President**

**CEO, ASICS Corporation**



## **Kobe Club**

**L. S. Peter Phillips**

**President, Board of Trustees**

**Designer, Design Fresco**



## **Kobe Regatta & Athletic Club**

**Kenichi Mikitani**

**President**





# Quality of Life, Hyogo & Kobe





# Total support from Hyogo and Kobe

## Municipal Governments

- Hyogo Prefecture
- Kobe City

## Support Organizations

- Hyogo-Kobe International Business Square
- Hyogo-Kobe Investment Support Center
  - Kobe Overseas Business Center
  - JETRO Kobe
  - Hyogo Pref. Business Support Center Tokyo

## Support Organizations in the U.S.

- Hyogo Business & Cultural Center (Seattle)
- Kobe Trade Information Office (Seattle)
- JETRO San Francisco





# Support Organizations in the U.S.

## Hyogo Business & Cultural Center (HBCC) Seattle, WA

Executive Director, Junko Kobayashi

Assistant Director, Mira Pomerantz

Email: [office@hyogobcc.org](mailto:office@hyogobcc.org)

Website: <https://www.hyogobcc.org/eng>

## Kobe Trade Information Office (KTIO) Seattle, WA

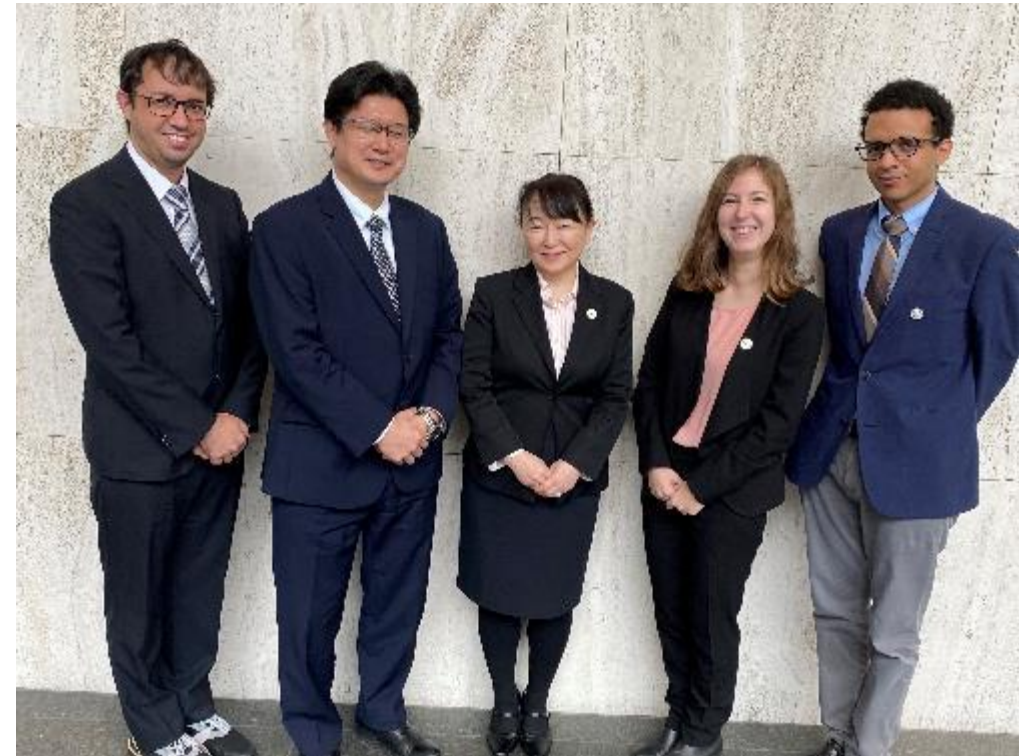
Director, Kenju Inada

Email: [info@citvofkobe.org](mailto:info@citvofkobe.org)

Websi



Safeco Plaza Building  
in downtown Seattle  
(HBCC & KTIO  
joint office)





# Next, Support for Startups



Hyogo Business & Cultural Center